

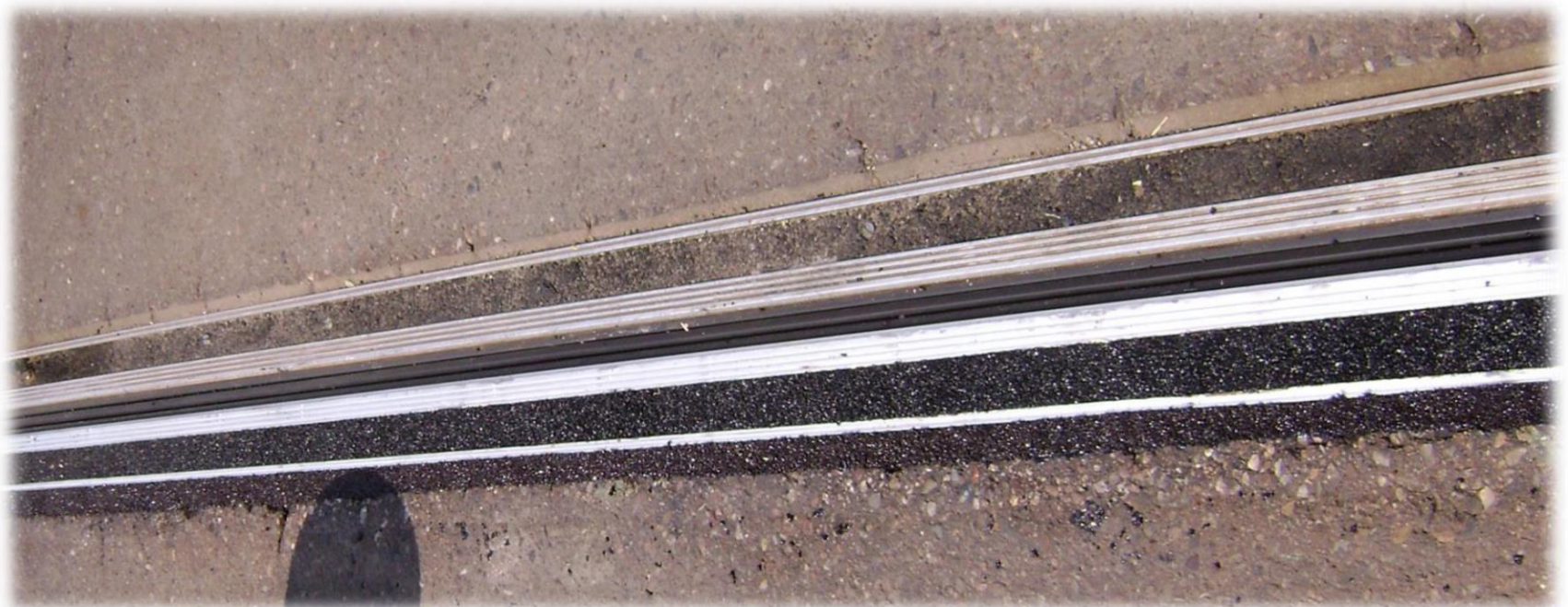
Project Details

PROJECT NAME	Ernest Henry Bridge Expansion Joint Replacement
PROJECT LOCATION	Cloncurry, QLD
CASA ROLE	Sub Contractor
CLIENT	Roadtek
CONTRACT VALUE	\$50,000.00
PROJECT COMPLETION DATE	3 October 2011
CONSTRUCTION MANAGER	Peter Casa
PROJECT MANAGER/CONTRACT ADMINISTRATOR	Wally Newton
SITE SUPERVISOR/SITE MANAGER	Kim Dawes

Project Scope

A failed expansion joint on Cloncurry River – Ernest Henry Bridge required urgent rectification due to the possibility of it causing vehicle damage if it became dis-lodged. Due to the urgency of the repair CASA mobilized to site, formulated the ITP including hold points, witness points and milestones. We ordered approved materials from MISKA and commenced removal of the existing joint to establish final scope.

On removal of the existing joint it was found that the substrate was damaged and dimensionally outside DMR specifications. Supplementary scope was derived and submitted for approval to rectify the problem and all remaining works were completed and signed off by Main Roads.



CASA Engineering Pty Ltd

ABN - 28 099 919 990

151 Tile Street WACOL QLD 4076

Phone – (07) 3271 2300

Fax – (07) 3271 2644